

Component Placing, Electrical

Applicable for C702, C702a & C702c

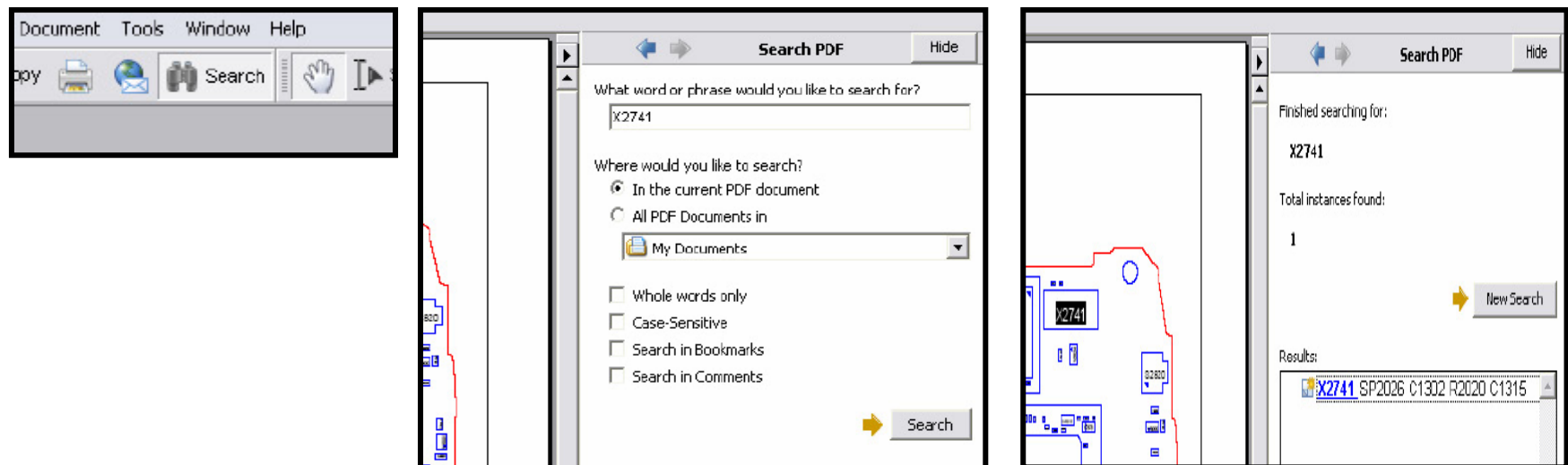
Contents

1	Mounting drawing table.....	2
2	Mounting drawing	3
3	Revision history	5

1. Mounting drawing table

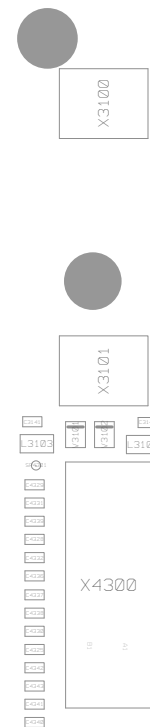
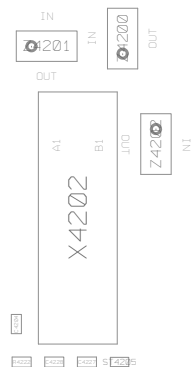
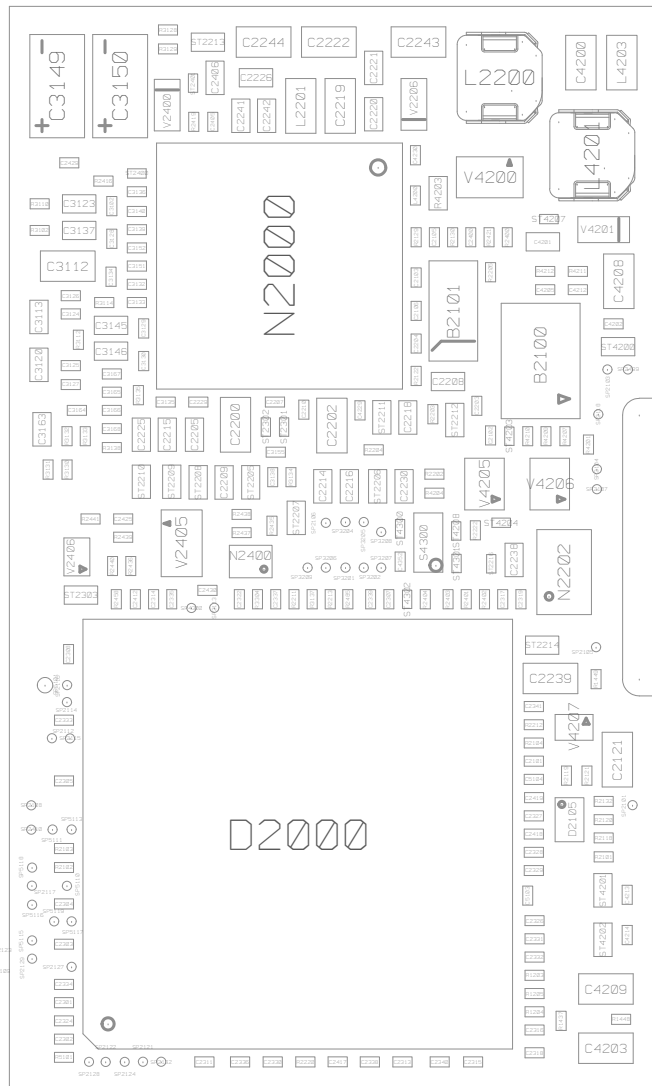
Board Number	Drawing	Comments
	1205-8718 EDGE 1206-0773 UMTS	

By using the “Search” function and enter the component name you can find the position of the component
(Use Adobe Reader 7.0 or a later version). Example: You can see the component name highlighted on the circuit board (use zoom to enlarge).



2. Mounting drawing 1206-0773

100%



3. Revision history

Rev.	Date	Changes / Comments
1	2008-05-22	1 st preliminary release
2	2008-09-08	Updated